

Tahir Foundation Building, NUS MD1

By MRT and NUS Internal Shuttle Bus

**Kent Ridge MRT
(Circle Line)**



301 South
Buona Vista Road
Singapore 118177

**Tahir Foundation
Building**

MD 1
National University
of Singapore
12 Science Drive 2,
#10-01, Singapore
117549



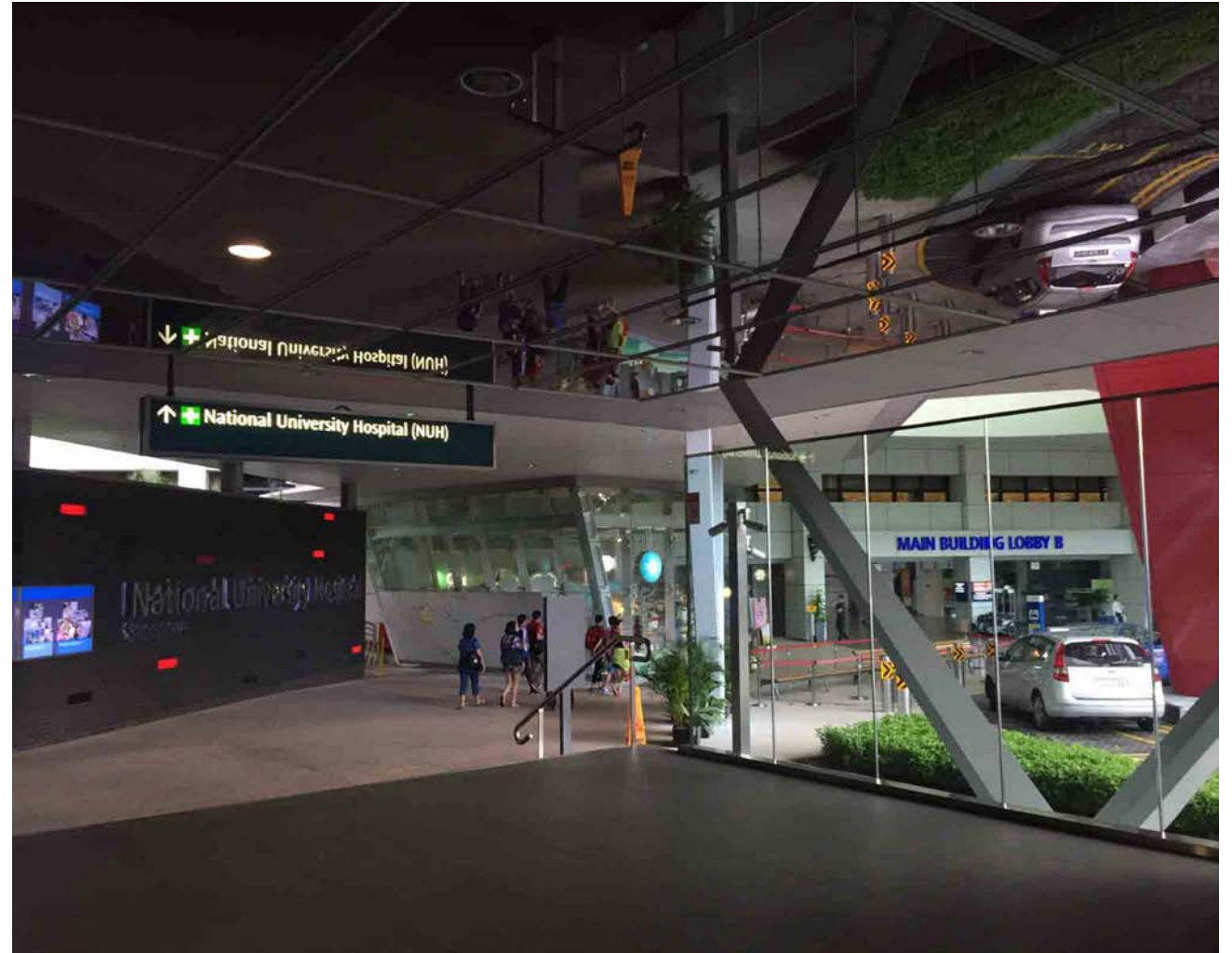
- Take the Circle Line MRT and alight at Kent Ridge MRT station
- Take the escalator up and head towards Exit A
- After tapping out from the MRT gantry, walk straight



- Once you reach this junction, follow the sign and turn left towards NUH Main Building



- Turn right after the flight of stairs towards the main lobby of NUH Main Building



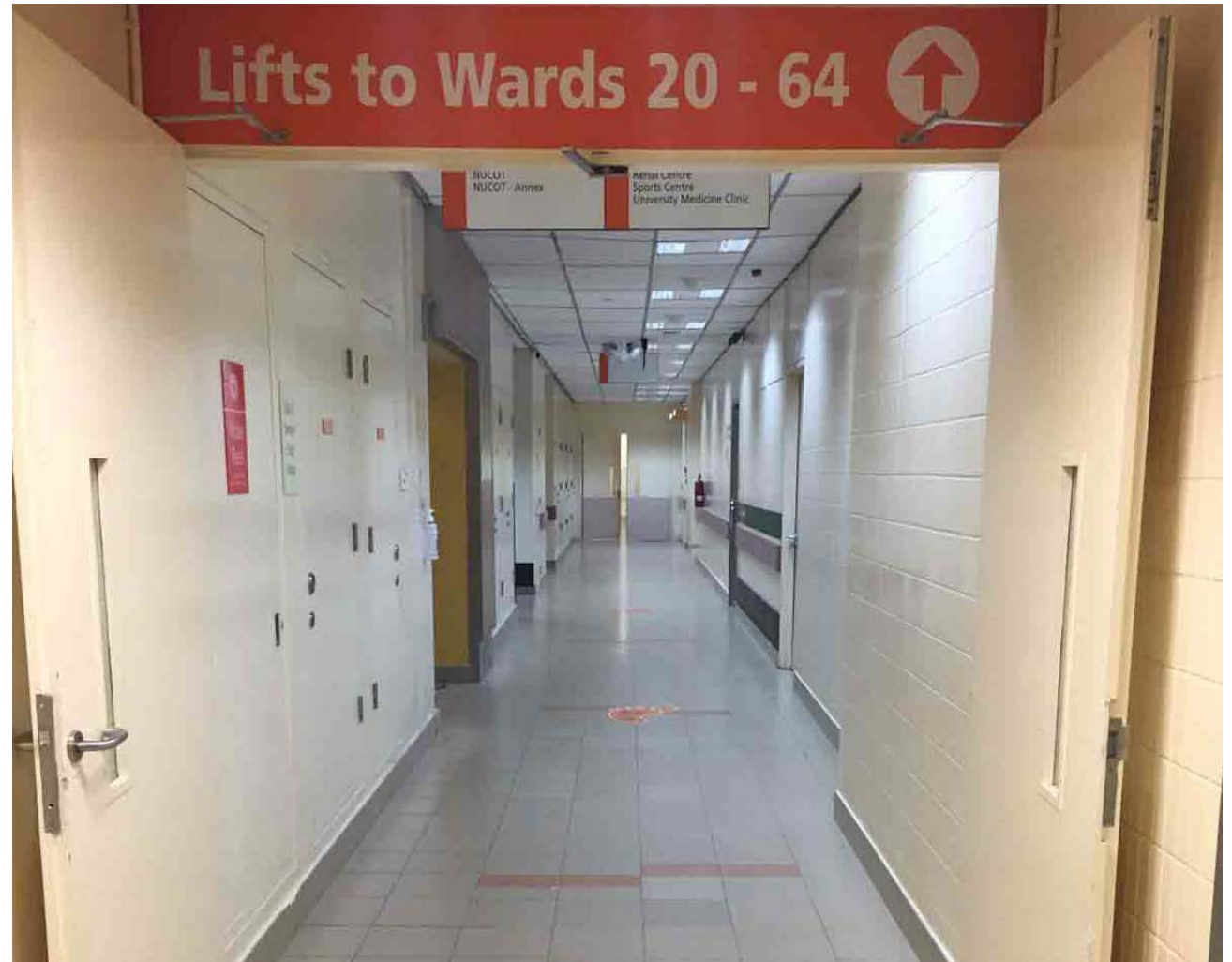
- Walk towards NUH Main Building (Lobby B)



- Walk straight until you see an Information Counter, after walking pass the Counter, turn right



- Walk along the corridor



- You may follow the stickers on the floor as a guide



- Continue walking along the corridor passing by a pharmacy
- You will see a open space after the pharmacy
- Head towards the open space



- There will be another Information Counter
- Turn right in front of the Information counter



- Walk past the food court 'Kopitiam' and head towards the glass door exit



- Turn left and walk straight after exiting the glass door
- There will be a zebra crossing up ahead



- Cross the first pedestrian crossing and walk up the stairs towards the second pedestrian crossing
- In the event of rain, take the longer sheltered walkway



- Cross the second pedestrian crossing and you will see MD6 building



- Walk up the flight of stairs and you will reach MD6 lobby



- Enter the glass door and walk pass the Reception / Security Counter



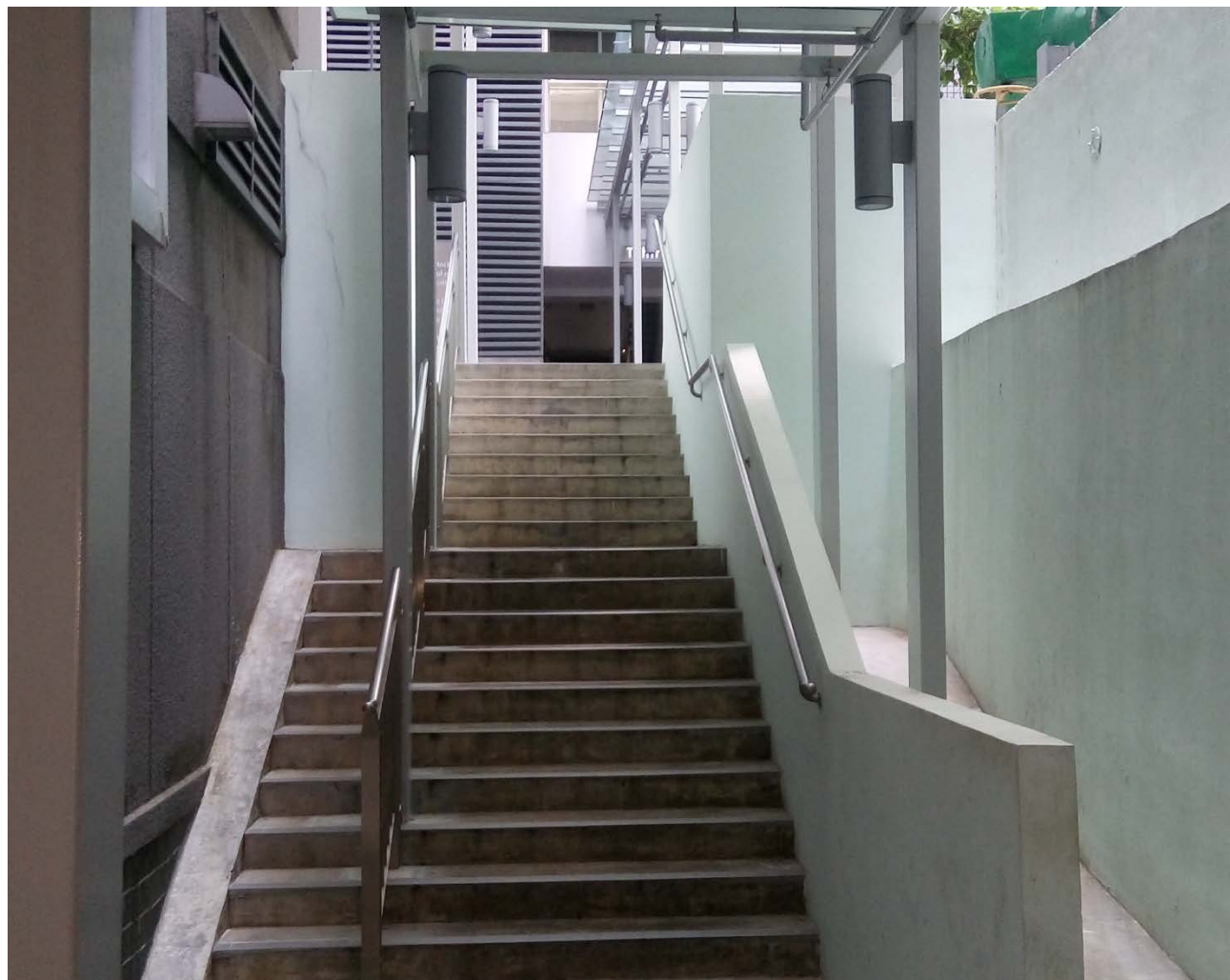
- After the glass door, turn left



- At the end of the junction, turn right into a narrow alleyway and head up the staircase



- Continue straight until the lift lobby



- You have reached at Level 2 of the Tahir Foundation Building (MD1)

